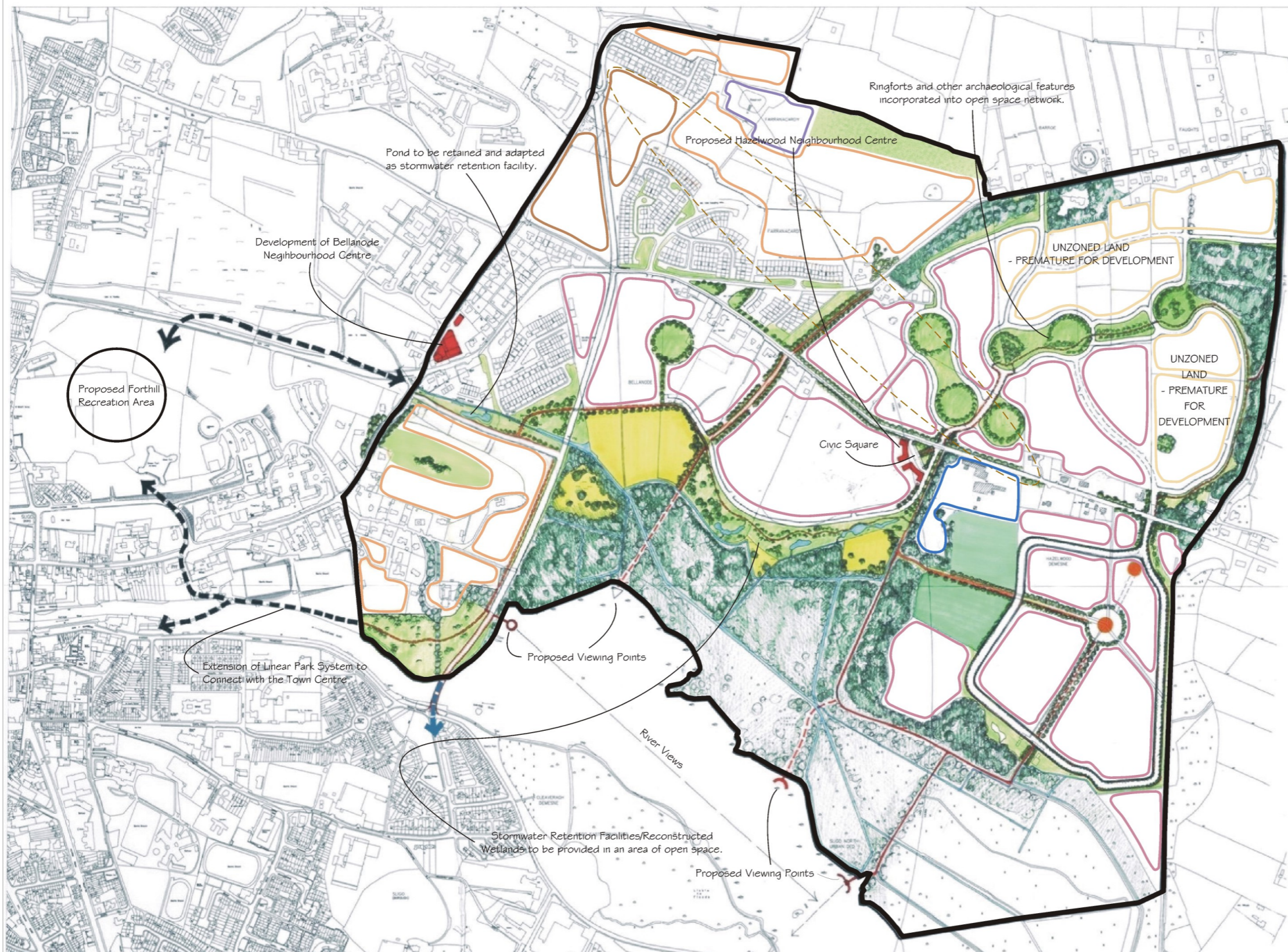


# Hazelwood - Ballinode Local Area Plan 2004

The plan proposes a number of cycle routes and pedestrian walks that provide a series of circuit or loop routes as amenity walks along the shoreline, woodlands and other areas of proposed open spaces.

**Figure 17:  
Masterplan**



- Wetland Areas to be Retained
- Existing Woodland Areas to be Retained
- Proposed Active Open Space
- Proposed Passive Open Space
- Sites of Archaeological Interest to be Incorporated into Open Space Layout
- Tree Planting in Areas of Passive Open Space
- Low Residential Density Zones
- Low to Medium Residential Density Zones
- Residential Development for Student Accomodation
- Future Potential Development
- Existing Industrial Use - Long Term Development Objective for Provision of Community Facilities and Possible Extension of Neighbourhood Centre
- Public Utility
- Proposed Neighbourhood Centres
- Key Architectural Feature or Focal Point (e.g. Sculpture)
- Pedestrian/Cycle Routes
- Possible Additional Pedestrian/Cycle Routes
- Physical Links or Connections for Pedestrians and Cyclists to Town Centre and Forthill Recreation Centre.
- Physical Links or Connections for Vehicles, Pedestriand Cyclists south to Clevearahg.
- Skyline Enhancement Zone